

Livermore Asset Management Program: Community Briefings

Spring 2021



1

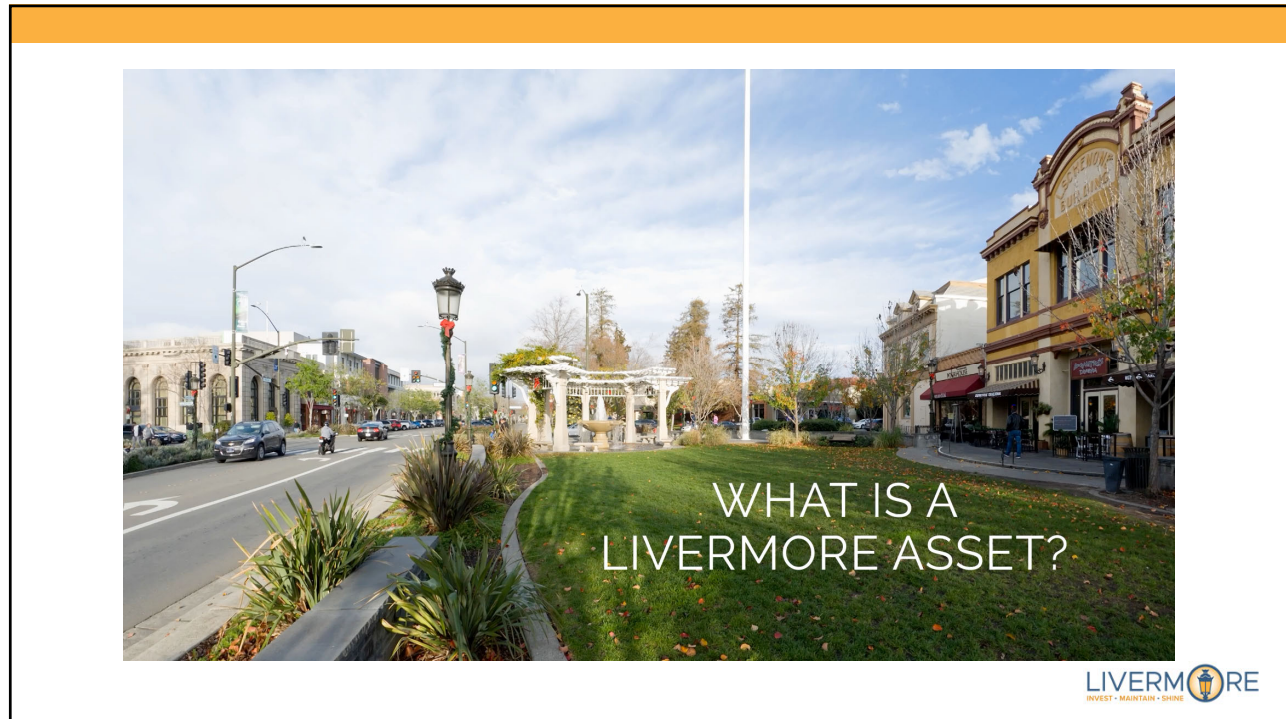
Today's Conversation

- Asset Management – an overview
- Feedback on Prioritizing Assets
- Strategy Discussion

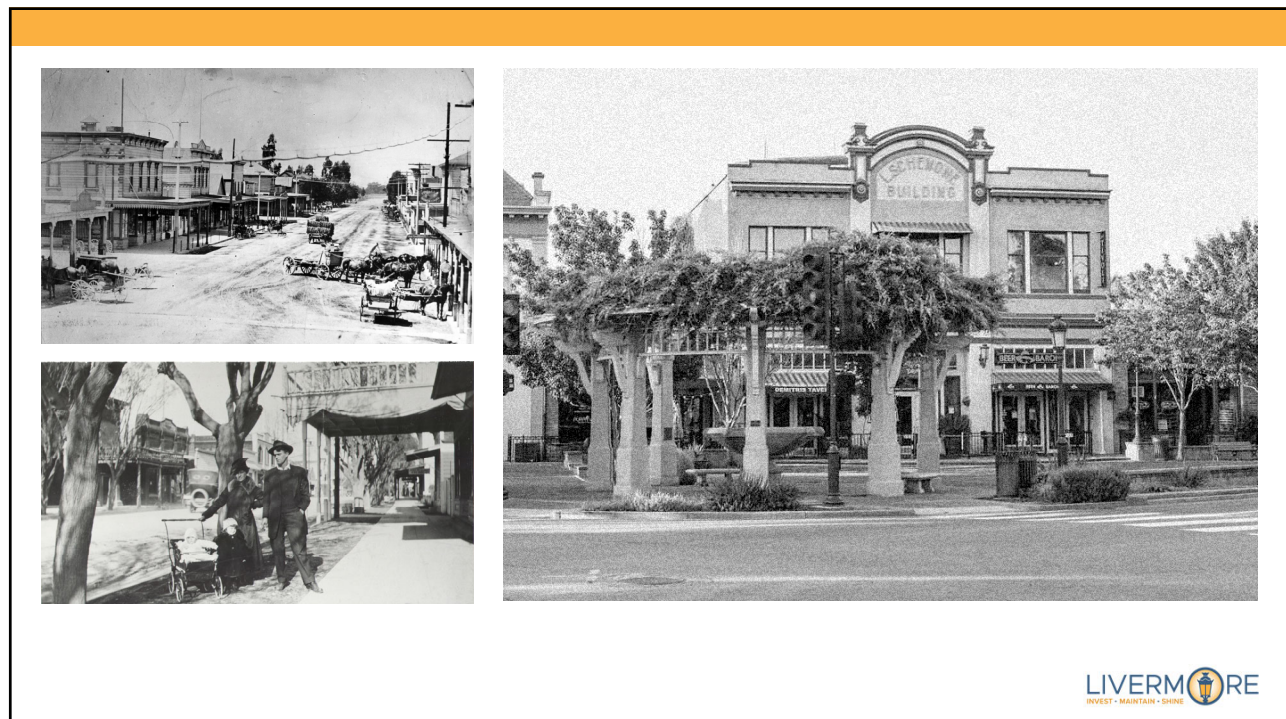


2

6/29/2021



3



4

PROBLEM STATEMENT

The City of Livermore does not have sufficient funds to care for our assets at the same level of service that is expected by residents.



5

Infrastructure Dilemma

- Repair/Replace ALL Assets-
\$40 million per year
- Current Spending on Asset
Repair and Replacement-
\$10 million per year
- Minimum Level of Service (High
Risk Only) - **\$20 million per
year**



6

6/29/2021

What is an asset?



LIVERMORE
INVEST • MAINTAIN • SHINE

7

ASSET

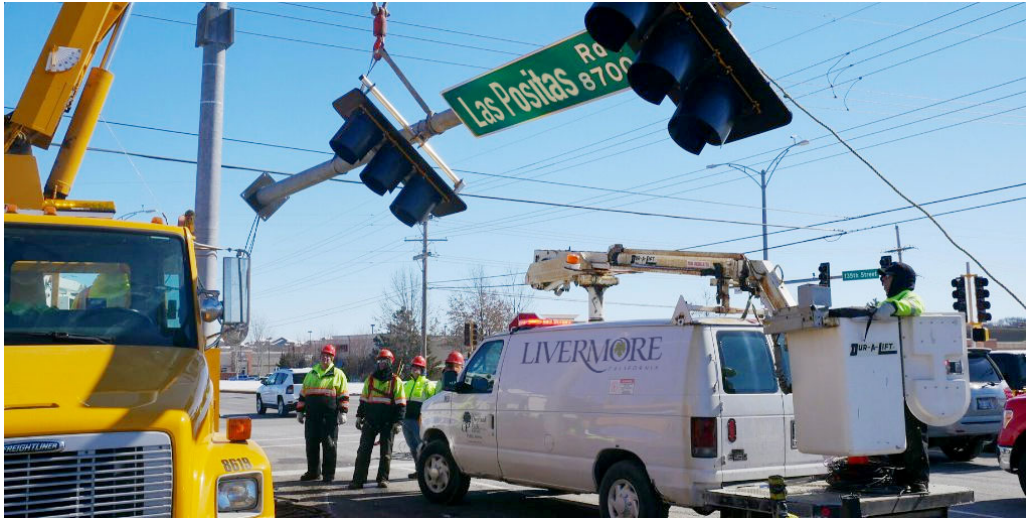
An asset is something that the City owns that requires periodic maintenance, repair, rehabilitation and replacement.



8

6/29/2021

What is asset management?



LIVERMORE
INVEST • MAINTAIN • SHINE

9

ASSET MANAGEMENT

Ensuring the safety, quality and reliability of
Livermore's community-owned property.



10



11



12

6/29/2021

Overview of City Assets

General Fund (worth \$2.4B)

Roadway Related

- Streets
- Sidewalks
- Curb ramps
- Curb/gutter
- Bridges
- Streetlights
- Traffic signals
- Traffic signs
- Landscaped Areas

Non-Roadway Related

- Walls/Fences
- Buildings
- Trees
- Parks/Plazas
- Trails
- Golf Course
- Stormwater System

Enterprise Funds (worth \$1B)

- Livermore Municipal Airport
- Wastewater System (includes Livermore Water Reclamation Plant)
- Recycled Water System
- Drinking Water System for 1/3 of Livermore
- Stormwater System



13

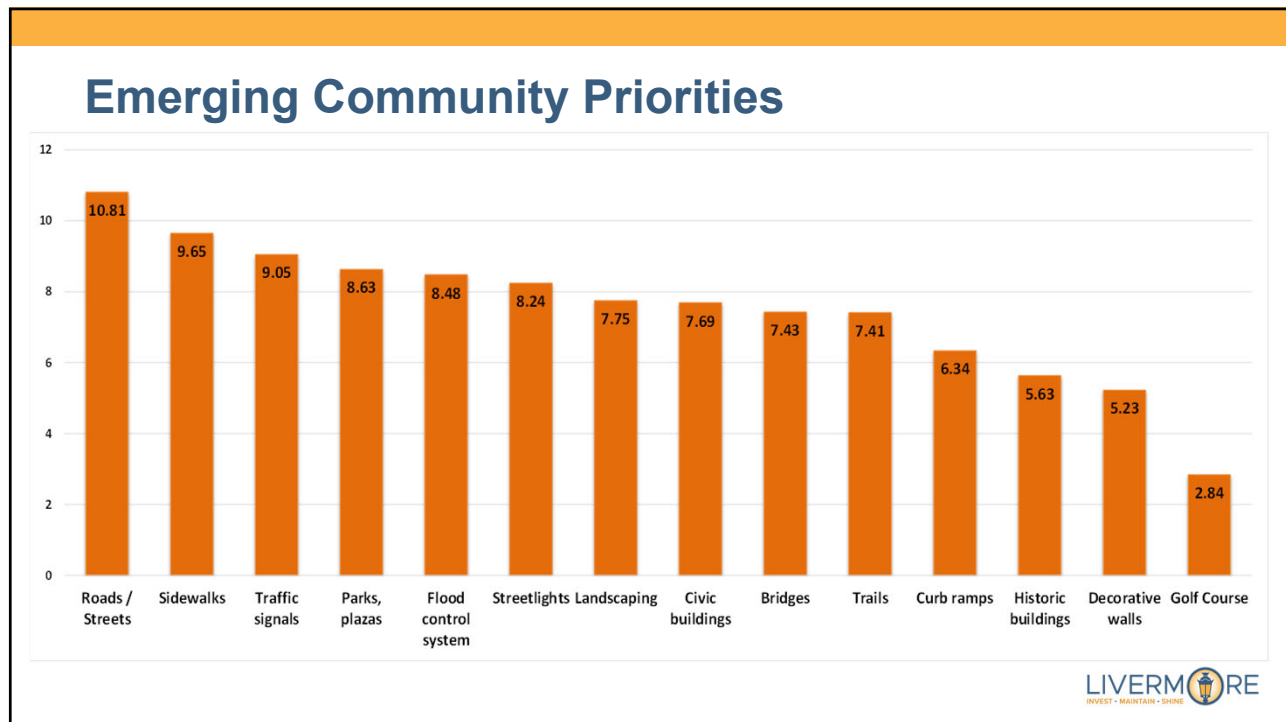
City Council Priority

Since 2016, Council has selected Asset Management as a Priority – helping ensure that our **community** continues to receive vital services through a **sustainable** infrastructure strategy.



14

6/29/2021



15



16

6/29/2021

Discussion: Potential Options and Solutions

A. Focus on public safety repairs and improvements.

B. Explore new grant funding opportunities, when available.

C. Focus resources where they benefit the most people.

D. Explore new revenue enhancement measures

E. Reduce the frequency and level of maintenance.

F. Partner with private entities to share the cost of managing assets.

G. Do not replace non-essential assets when they are beyond repair.

H. Share maintenance costs with property owners when the asset directly benefits owner.

I. Sell or transfer some assets.

J. Replace high-maintenance assets with lower-maintenance alternatives.

Other Ideas



Mentimeter Poll: menti.com/ii8w45mhp7



17

Stay involved!

menti.com/ii8w45mhp7



- Website: **LivermoreAssets.net**
- Contact: Debbie Bell
Public Works Department
City of Livermore
925-960-8024
dlbell@cityoflivermore.net



18

